




Overview

Hosted feature layers in **ArcGIS Online** (AGOL) can be opened in either **ArcMap** v10.5.1 or **ArcGIS Pro** v2.2.3 and edited locally (i.e. on your desktop). Edits can then be/synchronized back to the hosted feature layer in the *ESRI Cloud* so that all users in the *Group* can see the changes in *Web Maps*, *Dashboards*, and *Web Map Apps*.

The steps for accomplishing this in **ArcMap** and **ArcGIS Pro** are summarized in this document. This symbol  indicates a critical step or criteria to accomplish the task.

The Basic Steps

An **ArcMap/ArcGIS Pro** comparison of a simplified workflow for editing hosted feature layers on your desktop.

Step	ArcMap v10.5.1	ArcGIS Pro v2.2.3	Step
1	Start ArcMap and open a new or existing <i>Map Document</i>	Start ArcGIS Pro and open a new/existing <i>Project</i>	1
2	Add the hosted feature layer [Page 2]	Add the hosted feature layer [Page 6]	2
3	Create a local copy [Page 3]	Make edits [Page 7]	3
4	Make edits [Page 4]		
5	Synchronize layer to server [Page 5]		
Edit changes are now visible in AGOL components			
6	Disconnect local copy [Page 5]		
		Edit changes are now visible in AGOL components	
7	Save <i>Map Document</i> and exit ArcMap	Save <i>Project</i> and exit ArcGIS Pro	4

Table 1: ArcMap and ArcGIS Pro –Basic Steps

ArcGIS Pro provides hosted feature layer editing in real-time, **ArcMap** provides editing in near real-time with manual user actions.

The discussion that follows provides detailed instructions and screen shots if needed for both **ArcMap** v10.5.1 and **ArcGIS Pro** v2.2.3.

ArcGIS Terminology

Comparable terminology between...

ArcMap	ArcGIS Pro
Map Document	Project
Data Frame	Map
Map	Layout
Layer	Web Layer
Table of Contents	Contents
Field Calculator	Calculate by Field

To select and set domains for a field...

ArcCatalog → Feature Class → Properties → Fields → Field Properties [RC] Layer → Design → Domains

To manage domains...

ArcCatalog → XTools Pro → Domain Manger

or

ArcToolBox → Data Management Tools → Domains [RC] Layer → Design → Domains



Connecting to a Hosted Feature Layer and Editing Data

ArcMap

There are several methods for adding a hosted feature layer to ArcMap. It can be done from the **AGOL** user account at the hosted feature layer details page by clicking on *Open in ArcGIS Desktop...*

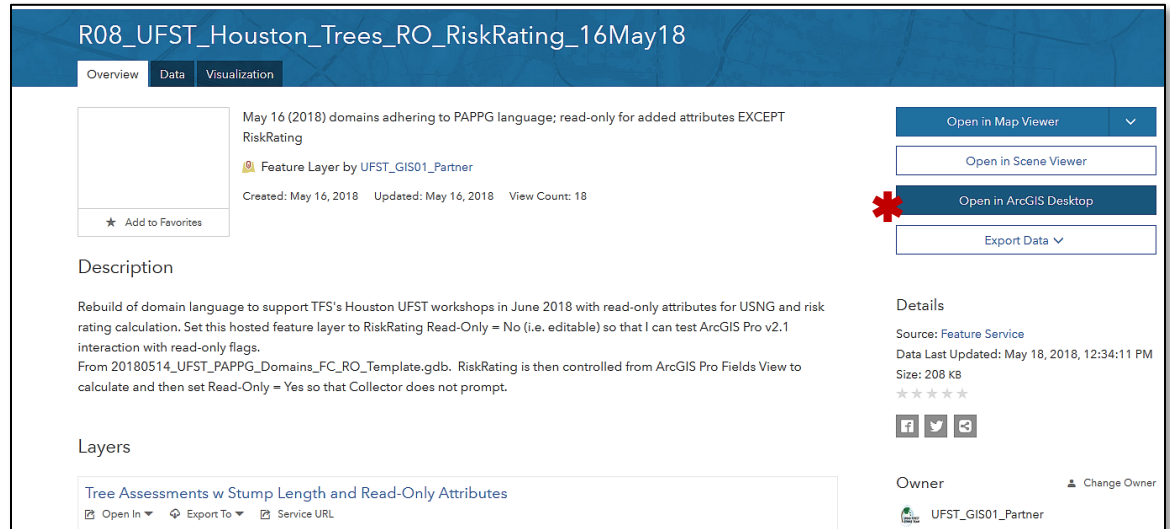


Figure 1: ArcGIS Online – Hosted feature Layer Details

Or, open **ArcMap** and a new or existing *Map Document*; you may be signed-in to your **AGOL** user account by default, if not, sign-in to your user account. Then with the *Add Data* → *My Hosted Services* menus select the desired hosted service...

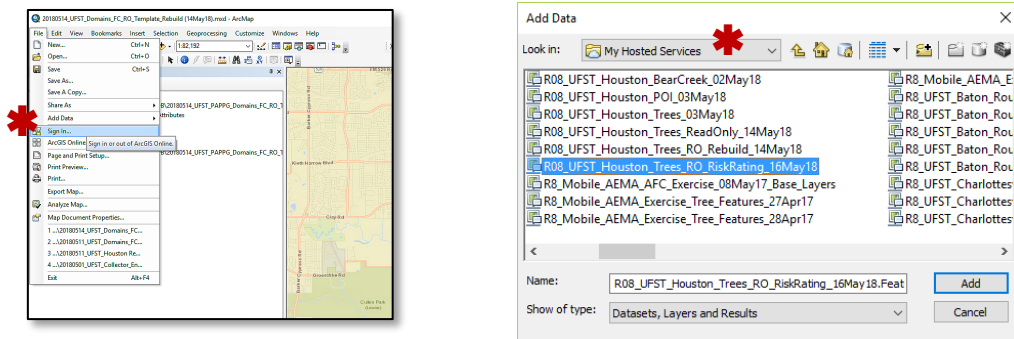
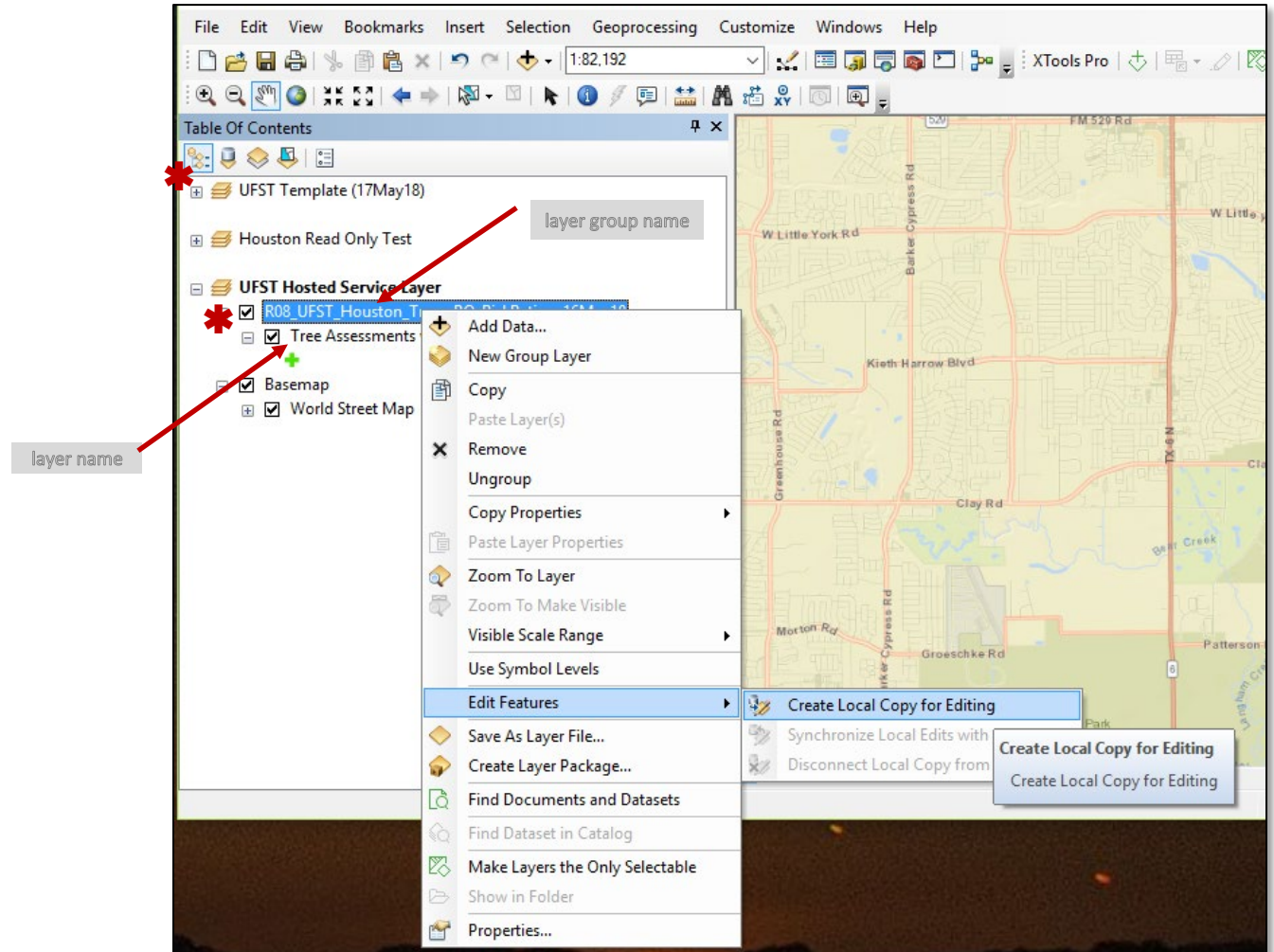


Figure 2: ArcMap – AGOL Sign-In (left) and ArcMap Add Data (right)

The selected hosted feature layer will be added to the *Map Document Table of Contents (TOC)*.

- 41 Make certain you are in the *List by Drawing Order* tab not the *List by Data Source* tab in the *TOC* ribbon.
- 42 Hover your mouse pointer over the *TOC* ribbon symbols to see *List by Drawing Order*, *List by Data Source*,
43 *List by Visibility*, *List by Selection*, and *Options* tooltips.
- 44 Right-click on the hosted feature layer **group** name (not the layer name), and select the *Edit*
45 *Features* → *Create Local Copy for Editing* menus.



46 Figure 3: ArcMap – Create Local Copy

47

At this point, you can open the attribute table and use *Field Calculator*, or perform other standard feature layer editing on any *Read-Only = No* (i.e. editable) attributes.

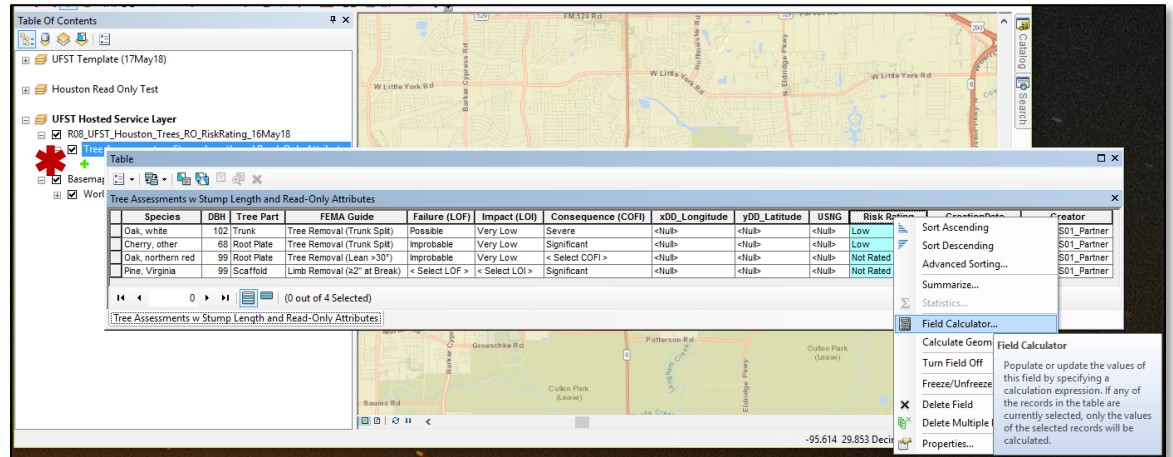


Figure 4: ArcMap – Attribute Table with Menus

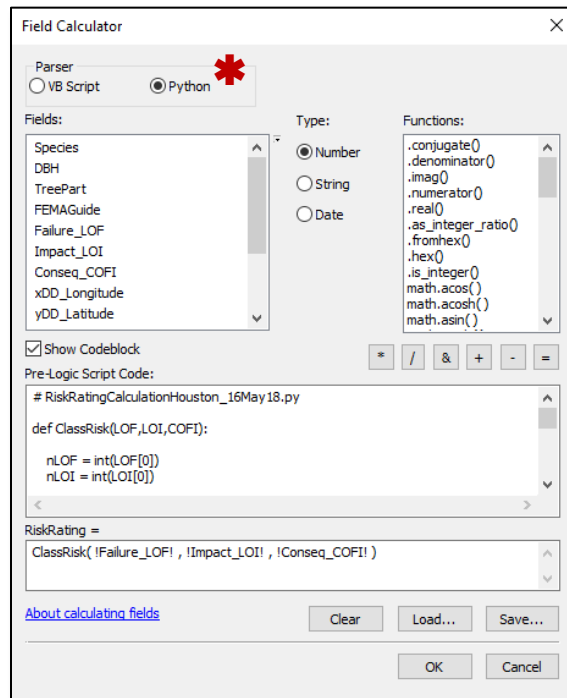


Figure 5: ArcMap –Field Calculator¹

The Python script, *RISKRatingCalculationHouston_16May18.CAL*, was loaded and run (i.e. OK in ArcMap) in this example screen. Continue editing with tools, Python scripts and stand-alone programs.

¹ Field Calculator has a tendency to switch to VB Script even if you load a Python script!

When all edits are complete, right-click on the hosted feature layer group name, and select the *Edit Features* → *Synchronize Local Edits* menus. Again, make certain you are in the *List by Drawing Order* tab not the *List by Data Source* tab in the TOC ribbon.

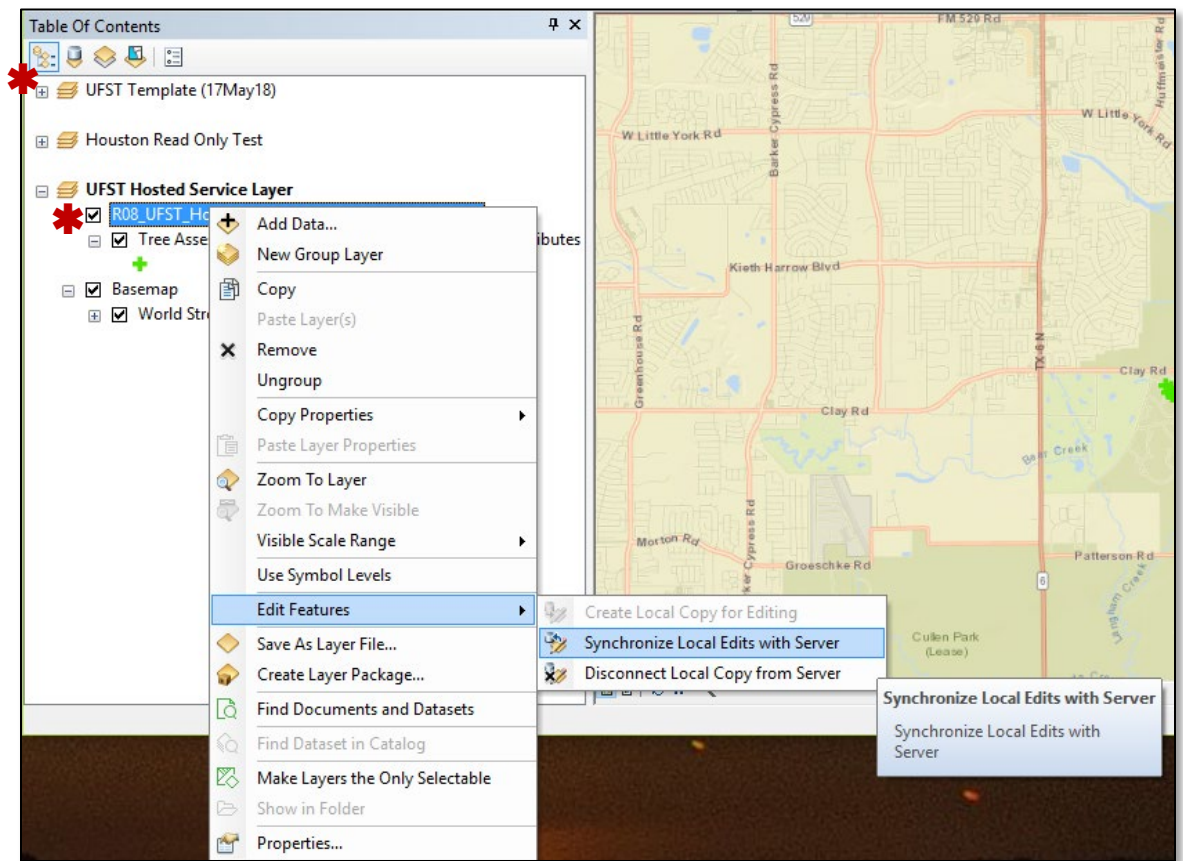


Figure 6: ArcMap –Synchronize Local Edits

That's it!

Your local edits are available at **AGOL** and in all components (e.g. *Web Maps*, *Web Map Apps*, *Dashboards*, and *Story Maps*) that use the hosted feature layer.

When you no longer need to synchronize edits disconnect the local copy from the server to clean up metadata on the client and server.

ArcGIS Pro

Open **ArcGIS Pro** and a new or existing *Project*; you should be signed-in to your **AGOL** user account by default. Then with *Add Data*, select the **AGOL** Group, and the hosted service layer...

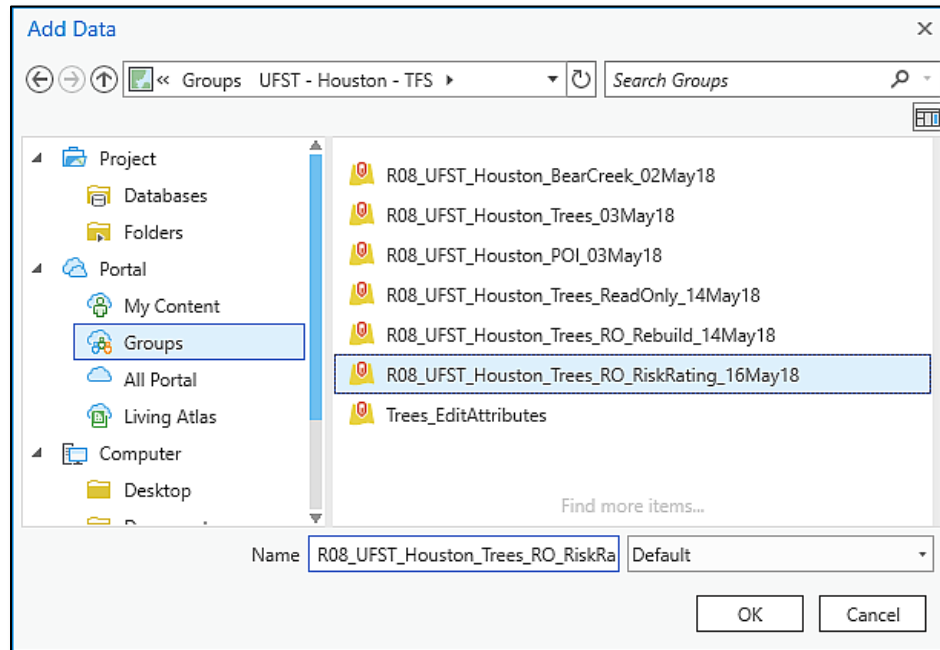


Figure 7: ArcGIS Pro –Add Data→Groups to Select Hosted Feature Layer

The hosted feature layer is symbolized in the *TOC (List by Data Source* tab), but you can verify the hosted source by right-clicking on the feature layer name (not the hosted feature **group** name this time) from either the *List by Data Source* or the *List by Drawing Order* tabs and then selecting from the *Properties* → *Source* menus.

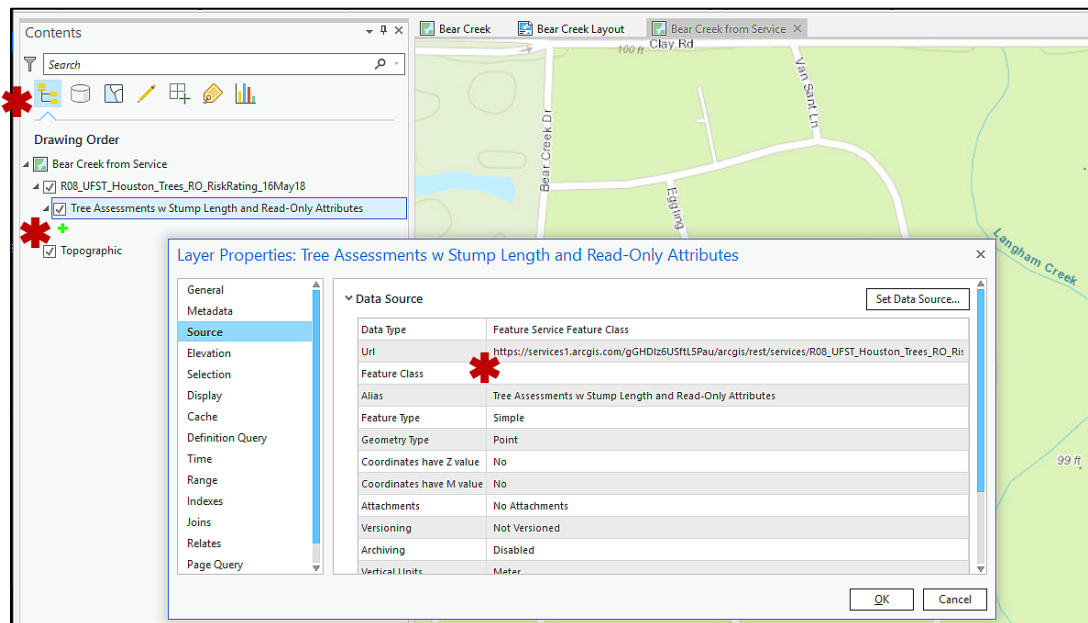
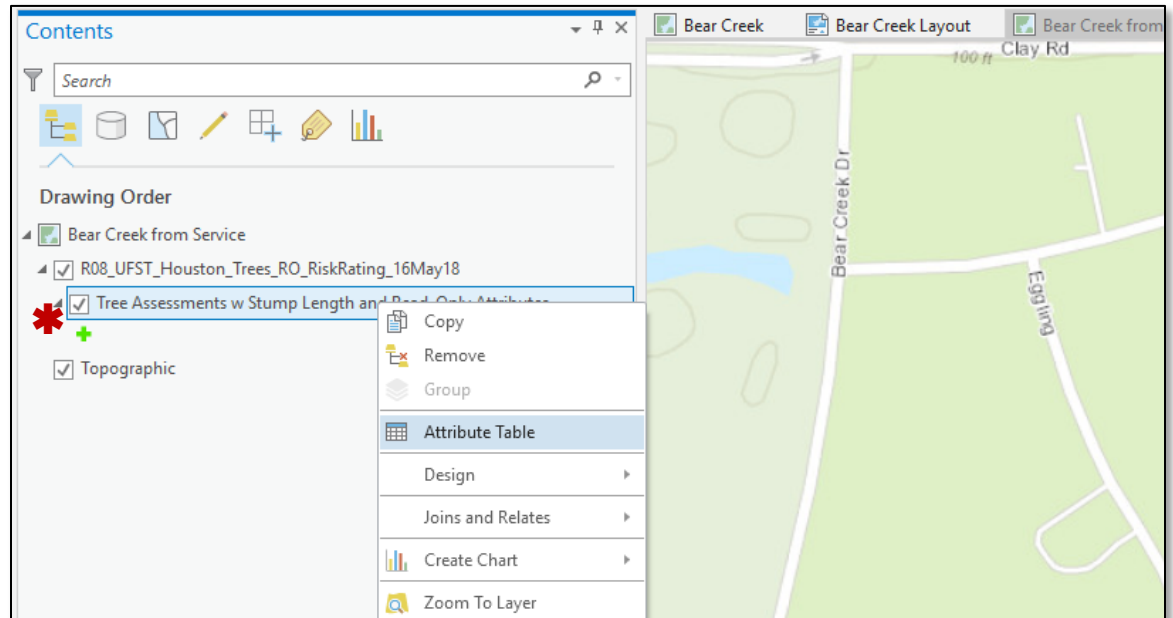


Figure 8: ArcGIS Pro –Verifying the Source of a Hosted Service Layer

78

Now right-click on the feature layer name, and select *Open Attribute Table...*



79

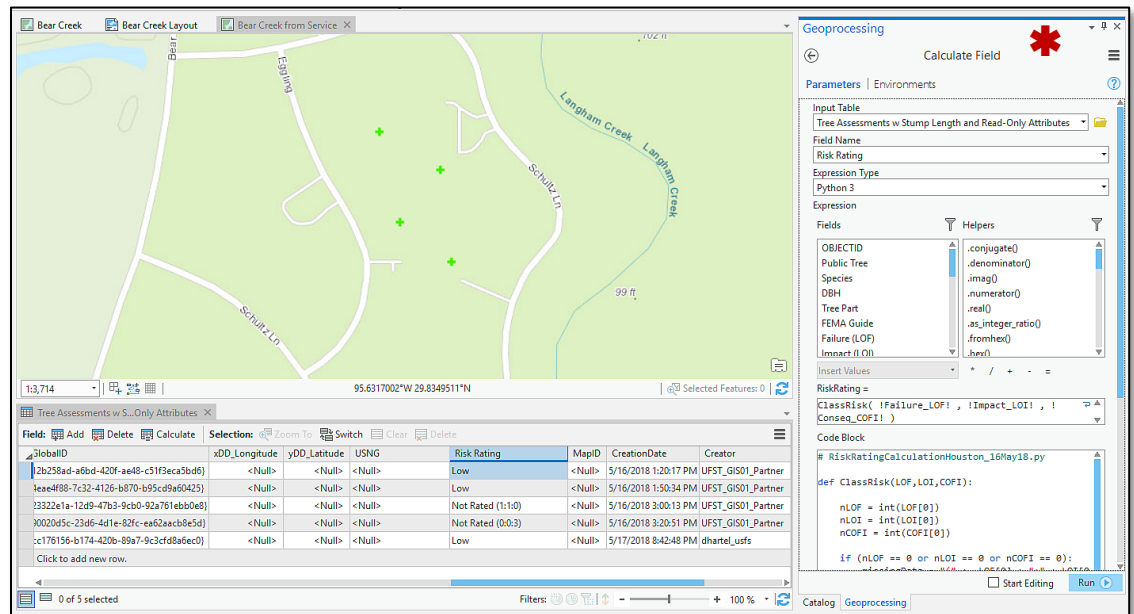
80

Figure 9: ArcGIS Pro –Open Attribute Table Menu from Contents

81

At this point you can perform a variety of geoprocessing tasks including *Calculate Field* and other standard feature layer editing on any *Read-Only = No* (i.e. editable) attributes.

82



83

84

Figure 10: ArcGIS Pro –Attribute Table and Geoprocessing (Calculate Field)

85

Figure 10 illustrates the geoprocessing dialog for Calculate Field (RiskRating).

86

That's it!

87

Your local edits are available at **AGOL** and in all components (e.g. *Web Maps*, *Web Map Apps*, *Dashboards*, and *Story Maps*) that use the hosted feature layer. Real-time! No local copy! No sync needed!

88