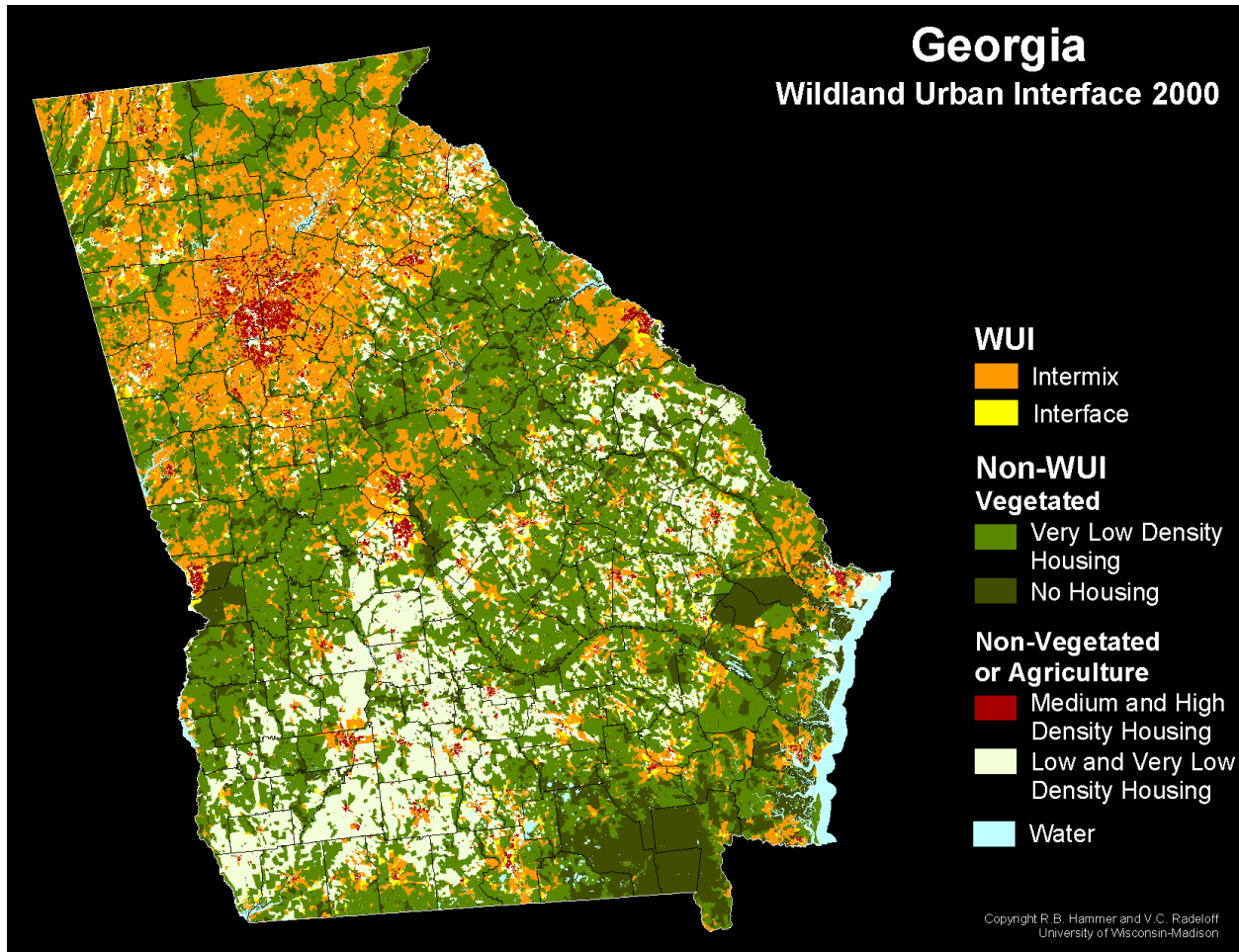


Wildland-Urban Interface: Georgia¹

The Wildland-Urban Interface (WUI) is the area where houses meet or intermingle with undeveloped wildland vegetation. This makes the WUI a focal area for human-environment conflicts such as wildland fires, habitat fragmentation, invasive species, and biodiversity decline. Using geographic information systems (GIS), U.S. Census and USGS National Land Cover Data was integrated to map the Federal Register definition of WUI (**Federal Register 66:751, 2001**).



From original GIF (and data) at: [HTTP://SILVIS.FOREST.WISC.EDU/LIBRARY/WUILIBRARY.ASP](http://silvis.forest.wisc.edu/library/WUILIBRARY.ASP)

The wildland-urban interface mapping was completed with funding by the North Central Research Station, the Pacific Northwest Forest Inventory and Analysis Program, and the Northern Global Change Program of the USDA Forest Service under the National Fire Plan.

Contacts for this project include:

Volker C. Radeloff
Dept. of Forest Ecology & Management
University of Wisconsin - Madison
1630 Linden Drive
Madison, WI 53706
(608) 293-4349

Roger B. Hammer
Dept. of Rural Sociology
University of Wisconsin - Madison
1180 Observatory Drive
Madison, WI 53706
(608) 263 2989

Susan I. Stewart
USDA Forest Service
North Central Research Station
1033 University Avenue, Suite 360
Evanston, IL 60201
(847) 866-9311 (Ext. 13)

¹ Characteristics and location of the wildland-urban interface in the United States, S.I. Stewart, V.C. Radeloff and R.B. Hammer, 2nd International Wildland Fire Ecology and Fire Management Congress; November 19, 2003, Orlando, FL (US)