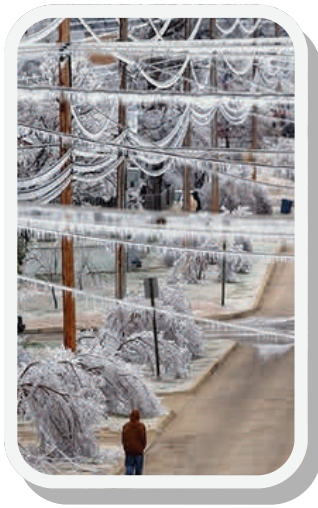


# Urban Forestry Emergency Operations Planning Guide for Storm Response (UFEOP Guide)



It should not come as a surprise that we are in a new era of catastrophes. In fact 91% of Americans live in places at a moderate-to-high risk of earthquakes, volcanoes, tornadoes, wildfires, hurricanes, flooding, or high-wind damage according to an estimate calculated for TIME by the Hazards and Vulnerability Research Institute at the University of South Carolina.

The UFEOP Guide provides urban forestry professionals concrete approaches when preparing for natural disasters that impact the urban forest. Our methodology included an extensive survey, interviews, meeting of experts, and review by professionals.



The guide contains these 10 key components of preparedness, identified as important in the survey and through interviews: planning, communications, contracts, incident command system, inventory, mutual aid agreements, training, vegetative debris, and vulnerability.

Our team believes that the reader will find this guide useful in planning and preparing your community's response to storms. We believe that a well thought out and tested storm preparedness protocol is essential in this era of increasing storms across the urban forest.

For more information go to [www.smarttreespacific.org](http://www.smarttreespacific.org) and click on the Urban Forestry EOP Guide button.

Photos courtesy of Asplundh and National Grid

The work upon which this publication is based was funded in whole or in part through a grant awarded by the National Urban and Community Forestry Advisory Council and the State and Private Forestry branch of the U.S. Forest Service, Department of Agriculture, Region 5.

In accordance with Federal law and U.S. Department of Agriculture policy, this institution is prohibited from discriminating on the basis of race, color, national origin, sex, age, or disability. To file a complaint of discrimination, write USDA, Director, Office of Civil Rights, Room 326-W, Whitten Building, 1400 Independence Avenue, SW, Washington, DC 20250-9410 or call (202) 720-5964 (voice and TDD). USDA is an equal opportunity provider and employer.



Contact: Teresa Trueman-Madriaga, Friends of Hawaii's Urban Forest, 92-963 Hunekai Place, Kapolei, Hawaii  
96707 [ttm@smarttreespacific.org](mailto:ttm@smarttreespacific.org)