

Utah Forest Facts

EXTENSION
UtahState
UNIVERSITY

Urban/Community Forestry

NR/FF/015

Conifers for Utah

Mike Kuhns, State Extension Forester

This fact sheet lists conifers that can be grown in Utah, including all native conifers and some suggested cultivars.

Introduction

Conifers are some of the most important ornamental plants grown in Utah landscapes. The same species of conifers tend to be planted over and over, but many more are available that have been proven to do well. This fact sheet provides a fairly complete list of conifer trees and shrubs that can be grown in Utah, as well as all native conifers. Most do well at least somewhere, many are rare (+), some are hard to obtain commercially, and many need very particular conditions to do well. Some are much more desirable than others.

The list is arranged alphabetically by family and Latin name. Organizing by Latin name is done to keep similar species together. Some example cultivars (cvs.) are listed, but more may exist. Learn about the species and know your site for successful

planting. * indicates a Utah native. USDA hardiness zones are provided, as well as comments about some species. For more information on many of these species, refer to the book “Trees of Utah and the Intermountain West” by Kuhns from USU Press, the

Utah Tree Browser CD, and the USU Extension Forestry Web site (extension.usu.edu/forestry). This and other Extension Forestry Fact Sheets can also be accessed online at extension.usu.edu/forestry.

Family Araucariaceae

Genus Araucaria

- monkey puzzle+ (*Araucaria araucana*); one has been growing for several years at USU; zones 7(5?)-11.

Family Cupressaceae

Genus Calocedrus

- incense-cedar (*Calocedrus decurrens*); cv. ‘Aureovariegata’; excellent large tree; many in Salt Lake valley; zones 5-9.

Genus Chamaecyparis

- Port Orford cedar or Lawson cypress+ (*Chamaecyparis lawsoniana*); many cvs. including ‘Golden King’, ‘Silber Star’; zones 5-7(8?).



Incense-cedar

- Sawara or Japanese falsecypress+ (*Chamaecyparis pisifera*); cvs. 'Filifera', 'Filifera Aurea', 'Plumosa', 'Squarrosa'; zones 4-8.

- Hinoki falsecypress+ (*Chamaecyparis obtusa*); cvs. 'Crippsii', 'Gracilis', 'Nana', 'Nana Gracilis', 'Nana Lutea', 'Tetragona Aurea'; zones 5-8.

Genus X *Cupressocyparis* (hybrids of *Cupressus macrocarpa* and *Chamaecyparis nootkatensis*)

- Leyland cypress (*Cupressocyparis X leylandii*); cvs. 'Castlewellan', 'Golconda', 'Naylor's Blue', 'Robinson's Gold', 'Silver Dust'; fast growing; several at UofU; zones 6(5?)-10.



Arizona cypress

Genus *Cupressus*

- Arizona cypress (*Cupressus arizonica*); cvs. 'Blue Ice', 'Blue Pyramid', 'Glauca', 'Silver Smoke'; good blue color; doing well in Logan, Utah; zones 7(5?)-9.



Italian cypress

- Italian cypress (*Cupressus sempervirens*); cvs. 'Stricta', 'Roylei', 'Glauca', 'Swane's Golden'; classic narrow cypress found in Washington County (also a few in Moab); zones 7-9.

Genus *Juniperus* (partial listing)

- Chinese juniper (*Juniperus chinensis*); many cvs. including 'Aurea', 'Columnaris Glauca', 'Hetzii', 'Pfitzeriana', 'Stricta'; highly variable cultivars; zones 3-7.

- common juniper* (*Juniperus communis*); cvs. 'Compressa', 'Effusa', 'Repanda', 'Sentinel', 'Silver Mile'; native shrubby juniper; zones 2-7.

- horizontal juniper (*Juniperus horizontalis*); many cvs. including 'Blue Chip', 'Blue Mat'; zones 2-7(?).

- one-seed juniper* (*Juniperus monosperma*); zones 2-7(?).

- Utah juniper* (*Juniperus osteosperma*); zones 3-7.

- Rocky Mountain juniper* (*Juniperus scopulorum*); many cvs. including 'Gray Gleam', 'Sky Rocket', 'Table Top Blue'; native that is common in landscapes; often blue color; zones 3-7.



Utah juniper

- eastern redcedar (*Juniperus virginiana*); many cvs. including 'Canaertii', 'Cupressiformis', 'Emerald Sentinel', 'Grey Owl', 'Spartan'; very similar to Rocky Mountain juniper; zones 2-9.



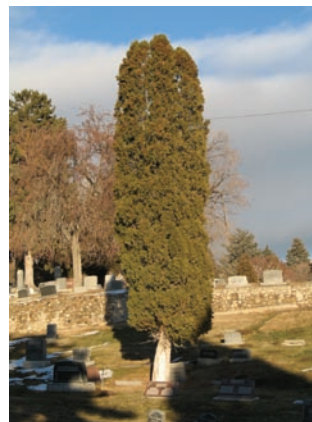
Rocky Mountain juniper

Genus *Thuja*

- northern whitecedar (*Thuja occidentalis*); many cvs. including 'Douglasi Aurea', 'Emerald', 'Globosa', 'Nigra', 'Pendula', 'Techny'; common in Utah; very hardy; zones 2-8.

- Oriental arborvitae (*Thuja orientalis*); many cvs. including 'Aurea Nana', 'Blue Cone', 'Filifera'; winter damage common; zones 6-9.

- western redcedar (*Thuja plicata*); many cvs. including 'Aurea', 'Gracilis', 'Hogan', 'Pumila', 'Zebrinus'; zones 5-7.



Northern whitecedar



Oriental arborvitae

Family Ginkgoaceae

Genus Ginkgo

- ginkgo (*Ginkgo biloba*); many cvs. including 'Autumn Gold', 'Fastigiata', 'Pendula', 'Princeton Sentry', 'Santa Cruz'; very tough, beautiful tree; zones 3-9.



Ginkgo

Family Pinaceae

Genus Abies

- white fir* (*Abies concolor*); cvs. 'Prostrata', 'Violacea', 'Wattezii', 'Wattezii Prostrata'; toughest of the native true firs; blue color; zones 3-7.



White fir

- grand fir+ (*Abies grandis*); growing at UofU; zones 6(5?)-7.
- subalpine fir* (*Abies lasiocarpa*); do not plant on warm, dry sites; zones 1-5.
- Spanish fir+ (*Abies pinsapo*); very interesting appearance; blue color; growing in Murray arboretum; zones 7(6?)-10(?).



Spanish fir

Genus Cedrus

- Atlas cedar (*Cedrus atlantica*); cvs. 'Fastigiata', 'Glauca', 'Glauca Pendula'; found all over Utah; nice blue color; zones 6(5?)-9.



Atlas cedar

- Deodar cedar (*Cedrus deodara*); cvs. 'Aurea', 'Aurea Nana', 'Aurea Pendula', 'Golden Horizon'; large one at St. George temple; zones 6-9.



Deodar cedar

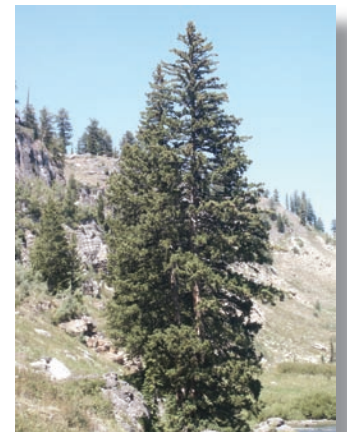
- Cedar-of-Lebanon+ (*Cedrus libani*); cvs. 'Compte de Dijon', 'Pendula', var. *stenocoma*; zones 5-7(8?).

Genus Larix

- European larch (*Larix decidua*); cvs. 'Fastigiata', 'Pendula'; deciduous; zones 2-6.
- Japanese larch (*Larix kaempferi*); cvs. 'Blue Rabbit', 'Nana', 'Pendula'; deciduous; zones 4-7.
- western larch+ (*Larix occidentalis*); deciduous; growing at old nursery site in Big Cottonwood Canyon; zones 4-6.

Genus Picea

- Norway spruce (*Picea abies*); many cvs. including 'Argenteospica', 'Decumbens', 'Inversa', 'Nidiformis', 'Pendula', 'Reflexa', 'Repens'; highly variable and ornamental; zones 2-7.
- Engelmann spruce* (*Picea engelmannii*); native, but rarely planted; zones 2-7(6?).



Engelmann spruce

- white spruce (*Picea glauca*); cvs. 'Alberta Globe', 'Conica', 'Conica Laurin', 'Densata', 'Doumetii'; 'Densata' cv. may be more heat tolerant than some spruces; growing in Orem; zones 2-6.



photo by Marry Sheide

White spruce 'Densata'

- Serbian spruce+ (*Picea omorika*); cvs. 'Expansa', 'Nana', 'Pendula'; zones 4-7.

- Oriental spruce (*Picea orientalis*); cvs. 'Aurea', 'Gracilis', 'Nana', 'Nutans', 'Skylands', 'Wittbold'; zones 4-7.

- blue spruce* (*Picea pungens* var. *glauca*); many cvs. including 'Fastigiata', 'Hoopsii', 'Iseli Foxtail', 'Kosten', 'Montgomery', 'Pendula'; zones 2-7(6?).

Genus *Pinus*

- lacebark pine+ (*Pinus bungeana*); cv. 'Compacta'; beautiful bark; may be hard to find; zones 4-8.



Lacebark pine

- lodgepole pine* (*Pinus contorta*); native that is rarely planted; zones 2-6.

- Japanese red pine (*Pinus densiflora*); cvs. 'Aurea', 'Globosa', 'Oculis-draconis', 'Pendula', 'Pumila', 'Umbraculifera'; some interesting dwarf forms; zones 3-7.



Japanese red pine

- pinyon* (*Pinus edulis*); native that is rarely planted; zones 4-8.

- Afghan pine (*Pinus eldarica*); long-needed; heat tolerant; found in Washington County; zones 6-8.



Afghan pine

- limber pine* (*Pinus flexilis*); cvs. 'Columnaris', 'Glauca', 'Glauca Pendula', 'Glenmore Dwarf', 'Pendula', 'Vanderwolf's Pyramid'; native with cvs. available; zones 4(3?)-7.

- Aleppo pine (*Pinus halepensis*); heat tolerant; found in Washington County; zones 8-10.

- Bosnian pine (*Pinus heldreichii*); growing at Ogden River Parkway Arboretum; zones 6(5?)-8.



Jeffrey pine

- Jeffrey pine+ (*Pinus jeffreyi*); similar to ponderosa pine; growing in Murray arboretum; zones 3-7.

- Korean pine+ (*Pinus koraiensis*); cvs. 'Glauca', 'Morris Blue', 'Silveray', 'Winton'; zones 3-7.

- bristlecone pine* (*Pinus longaeva*); cv. 'Sherwood Compact' (*Pinus aristata*); native that is somewhat common in cultivated landscapes; zones 5(4?)-7.



Bristlecone pine



Singleleaf pinyon

- singleleaf pinyon* (*Pinus monophylla*); native that is rarely planted; zones 5(4?)-9.
- western white pine+ (*Pinus monticola*); zones 5-7.
- mugo pine (*Pinus mugo*); cvs. 'Aurea', 'Mops', 'Sherwood Compact'; common shrubby pine; zones 2-8.
- Austrian pine (*Pinus nigra*); cvs. 'Aurea', var. *cebennensis*, 'Hornibrookiana'; very common and tough; zones 4-7.
- Japanese white pine (*Pinus parviflora*); cvs. 'Adcock's Dwarf', 'Bergman', 'Brevifolia', 'Glauca'; bluish color; zones 4-7.
- Balkan or Macedonian pine+ (*Pinus peuce*); zones 4-7.
- ponderosa pine* (*Pinus ponderosa*); native that is fairly commonly planted; long-needled; zones 3-7.



Ponderosa pine

- southwestern white pine+ (*Pinus strobiformis*); blue color; zones 5-9.

- Scotch or Scots pine (*Pinus sylvestris*); cvs. 'Aurea', 'Beuvronensis', 'Fastigiata', 'Watereri'; common; orange upper bark; zones 2-8.



Scotch pine

- Japanese black pine (*Pinus thunbergii*); cvs. 'Compacta', 'Globosa', 'Iseli', 'Oculus-draconis', 'Thunderhead'; zones 5-9.

- Himalayan pine+ (*Pinus wallichiana*); cv. 'Zebrina'; very long needles; cold hardy; zones 5(4?)-7.



Himalayan pine

Genus *Pseudolarix*

- golden-larch+ (*Pseudolarix amabilis* or *P. kaempferi*); cv. 'Annesleyana'; deciduous; zones 5(4?)-7.

Genus *Pseudotsuga*

- Douglas-fir* (*Pseudotsuga menziesii*); cvs. 'Compacta', 'Fastigiata', 'Pendula'; native that is sometimes planted; zones 4-6.



Douglas-fir

Family Sciadopityaceae

Genus *Sciadopitys*

• Japanese umbrella pine+ (*Sciadopitys verticillata*); cvs. 'Aurea', 'Green Star', 'Jim Cross', 'Pendula', 'Richie's Cushion'; very rare; growing at USU for several years; zones 5-7.



Japanese umbrella pine

Family Taxaceae

Genus *Taxus*

• English yew (*Taxus baccata*); cvs. 'Aurea', 'Fastigiata', 'Nana', 'Pygmaea', 'Repandens', 'Summergold'; commonly planted shrubs; shade tolerant; zones 5(4?)-7.

• Japanese yew (*Taxus cuspidata*); cvs. 'Aurescens', 'Capitata', 'Expansa', 'Nana', 'Pyramidalis'; commonly planted shrubs; shade tolerant; zones 5(4?)-7.

Family Taxodiaceae

Genus *Cunninghamia*

• Cunninghamia or common Chinafir+ (*Cunninghamia lanceolata*); cv. 'Glauca'; very rare; growing at USU for several years; zones 6(5?)-9.



Cunninghamia

Genus *Metasequoia*

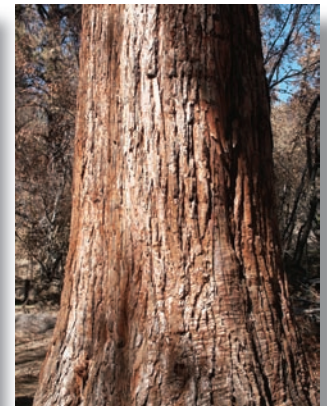
• dawn redwood (*Metasequoia glyptostroboides*); cvs. 'Emerald Feathers', 'National', 'Ogon', 'Rowena', 'Sheridan Spire'; deciduous; similar in some ways to baldcypress; zones 4-8.



Dawn redwood

Genus *Sequoiadendron*

• giant sequoia (*Sequoiadendron giganteum*); cv. 'Pendulum'; fairly common in Salt Lake valley; planted specimen in Pine Valley Mtns. is 110 feet tall; zones 6(5?)-8.



Giant sequoia

Genus *Taxodium*

• baldcypress (*Taxodium distichum*); cvs. 'Fastigiata', 'Pendens', 'Shawnee Brave'; deciduous; swamp species, but does well elsewhere; on USU, UofU, and BYU campuses; zones 4-11.



Baldcypress

Utah State University is committed to providing an environment free from harassment and other forms of illegal discrimination based on race, color, religion, sex, national origin, age (40 and older), disability, and veteran's status. Utah State University's policy also prohibits discrimination on the basis of sexual orientation in employment and academic related practices and decisions. Utah State University employees and students cannot, because of race, color, religion, sex, national origin, age, disability, or veteran's status, refuse to hire; discharge; promote; demote; terminate; discriminate in compensation; or discriminate regarding terms, privileges, or conditions of employment, against any person otherwise qualified. Employees and students also cannot discriminate in the classroom, residence halls, or in on/ off campus, USU-sponsored events and activities.

This publication is issued in furtherance of Cooperative Extension Work, Acts of May 8 and June 30, 1914, in cooperation with the U. S. Department of Agriculture, Jack M. Payne, Vice President and Director, Cooperative Extension Service, Utah State University. Published March 2007.