

**What Does the City Have?**  
Different Types of Plans

Aubrey Hammontree, AICP  
Oklahoma City Planning Department

---

---

---

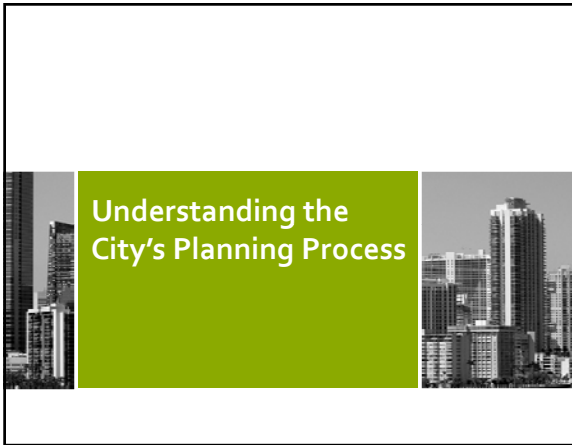
---

---

---

---

---



**Understanding the City's Planning Process**

---

---

---

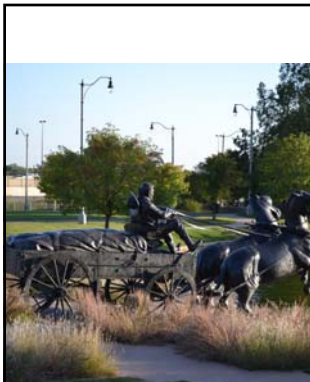
---

---

---

---

---



*Each City's planning process is different; just as cities themselves are different.*

---

---

---

---

---

---

---

---



**What are some factors that make the approach to planning so variable?**

---

---

---

---

---

---

---

---



**Figure out how you can contribute to plans and the planning process.**

---

---

---

---

---

---

---

---



**How hard could it be?**  
*Everyone knows what a "plan" is...*

Plans are policy documents (not regulatory tools) and typically do not have legal enforcement ability.

They provide a framework that helps guide future development and investment, and aid in decision-making.

---

---

---

---

---

---

---

---



### Basic ingredients of most plans

- Establish a **vision** for where the community wants to be,
- Identify **issues and trends** that are affecting the community,
- Set **goals and objectives** for addressing those issues,
- Develop **policies and strategies** to achieve goals, and
- Create an **implementation plan** to measure and ensure progress.

---

---

---

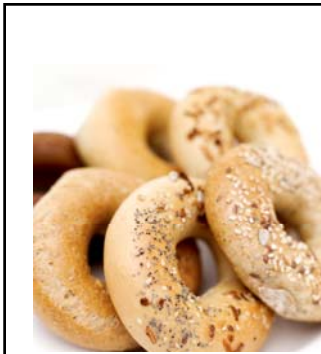
---

---

---

---

---



**But what you make with these same ingredients can take many different forms**

---

---

---

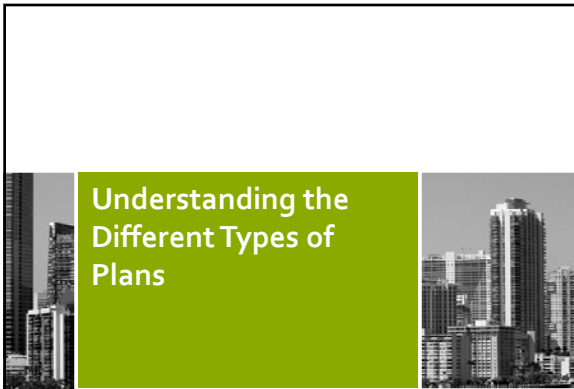
---

---

---

---

---



---

---

---

---

---

---

---

---



**What variables make plans different?**

---

---

---


---

---

---

---

---



**Figure out how you can integrate urban forestry into these plans.**

---

---

---

---

---

---

---

---



**Comprehensive Plans**  
*(a.k.a. General Plan or Comprehensive Master Plan)*

- Long term (20+ years)
- Applies to large geographic areas (regions, cities, towns)
- Broad scope
- Coordinates interrelated functions
  - Land use
  - Transportation
  - Utilities
  - Housing
  - Parks and Recreation

---

---

---

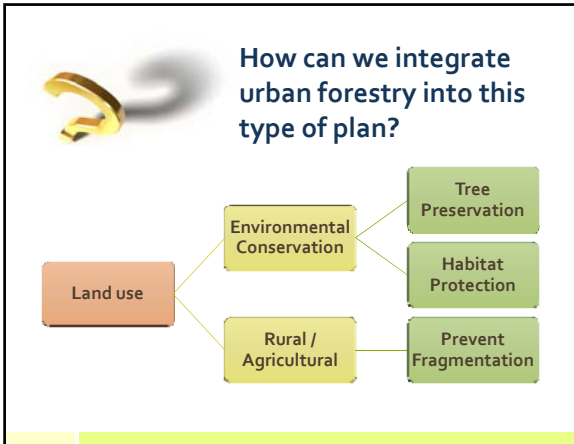
---

---

---

---

---



---

---

---

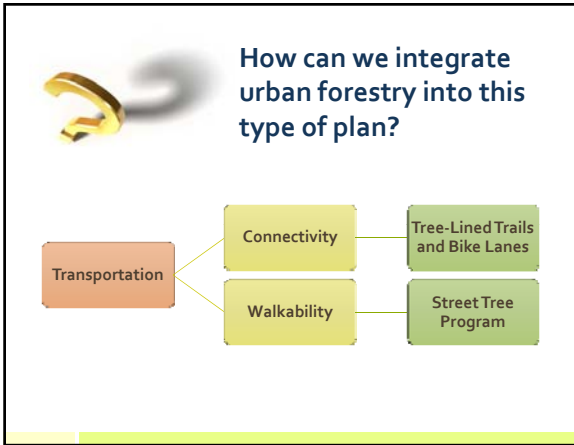
---

---

---

---

---



---

---

---

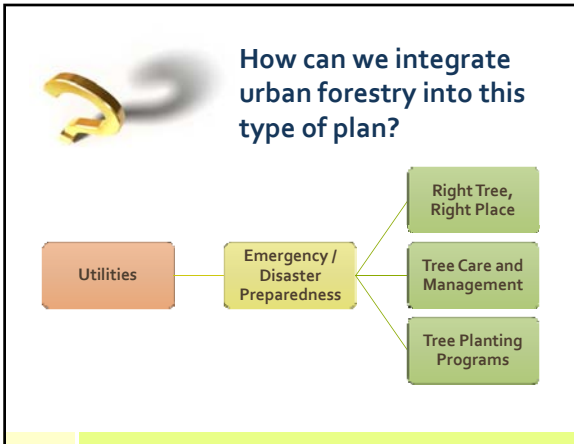
---

---

---

---

---



---

---

---

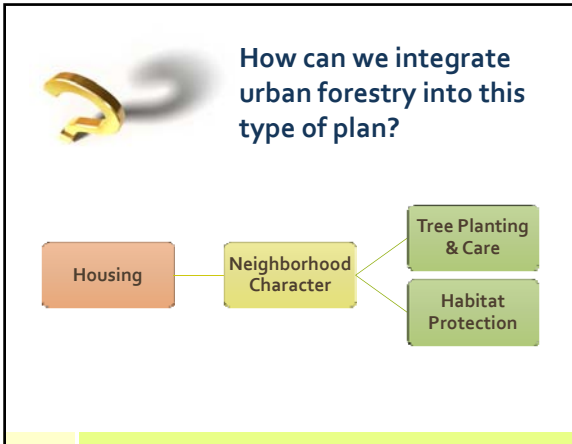
---

---

---

---

---




---

---

---

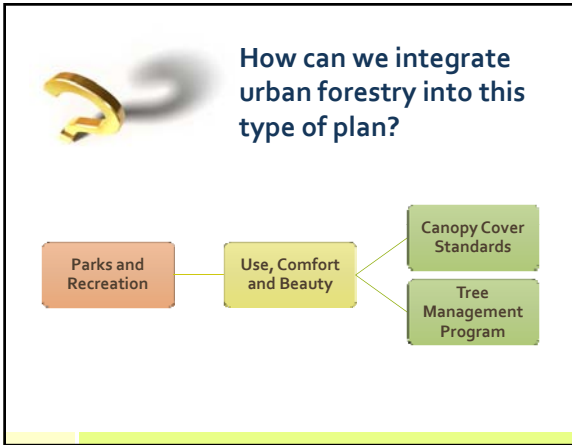
---

---

---

---

---




---

---

---

---

---

---

---

---



**Strategic Plans**  
*(a.k.a. Strategic Action Plans, Strategic Development Plans)*

- Mid-range term (5-10 years)
- Focuses on selected issues
- Usually applied to defined geographic areas (hard to apply to an entire city)
- Stronger emphasis on business, economy development
- Heavy on specific actions taken in a strategic sequence

---

---

---

---

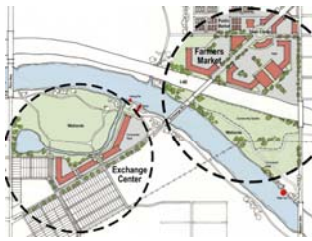
---

---

---

---

**Example:**  
**North Canadian River Strategic Action & Development Plan**



**Goal:** Redesign Exchange Street to provide a safer, more inviting pedestrian linkage between the Farmers Market District, the River, and Stockyards City.

Incorporate street trees, pedestrian lighting, detached walkways, and other streetscape improvements into the Exchange Street right-of-way between the Farmers Market and the river to create a more visible connection and more inviting environment for pedestrians.

---

---

---

---

---

---

---

---

---

---



**Master Plans**

(a. k.a. Master Development Plans)

- Applies to a defined geographic area
- Involves physical planning, urban design, site design
- Assigns specific types of development and streets geographic area
- Usually includes illustrations, renderings, development guidelines

---

---

---

---

---

---

---

---

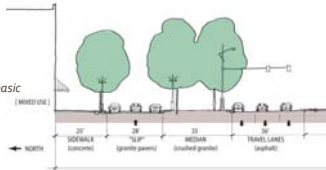
---

---

**Example:**  
**Core to Shore Plan**

**Boulevard Design and Streetscape**  
 The new boulevard design includes six basic elements:

- The overall design idiom
- The basic street channel
- Parking slips
- Wide adjacent sidewalks
- Streetscape elements
- The railroad underpass




---

---

---

---

---

---

---

---

---

---



### Special Area Plans

(Types include: Corridor Plans, Neighborhood Plans, District Plans, etc.)

- Framework consistent with other plan types (issues, goals, objectives, strategies/actions) but content is specific to a topic or geographic area
- Because of smaller, more focused scale, can include components of strategic or master plans

---

---

---

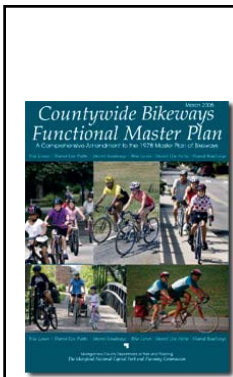
---

---

---

---

---



### Functional Plans

(a.k.a. Functional Master Plans)

- Supplements a comprehensive plan, or is done to elaborate on a plan element
  - Transportation
  - Parks and Recreation
  - Historic Preservation
  - Agricultural Preservation
  - Environmental
  - Water / Drainage
  - Tourism

---

---

---

---

---

---

---

---




---

---

---

---

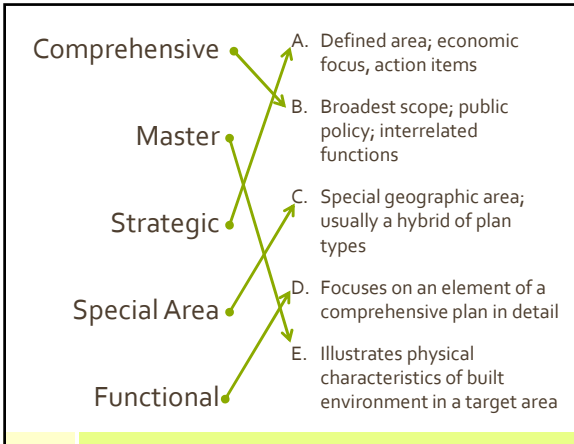
---

---

---

---






---



---



---



---



---



---

**So how, again, can we integrate urban forestry into these plans?**

---



---



---



---



---



---

**Contribute to any and all of these common plan components:**

- Vision
- Goals
- Objectives
- Policies / Strategies / Actions
  - Creating or changing ordinances and regulations
  - Developing review criteria for development proposals
  - Creating incentives
  - Forming partnerships or programs
- Identifying and prioritizing Capital Improvements

---



---



---



---



---



---



---

---

---

---

---

---

---

---